

This week, we are learning to read and spell words containing **a\_e** saying *lail*.



Level 5

### Top Tip

**a\_e** is a split digraph. To remember this, we say that **a** and **e** are cheeky partners. When **a** and **e** work together, they say *lail*. Because **a** and **e** are too cheeky to sit together, they must have a letter sit between them to 'split' them, e.g. *ate*, *cake*, *name*.

### Picture



cake

### Formation



Finish at the red dot.

### Word List

Can you read these words?

make

strabe

snake

same

came

tave

glave

cake

name

ate

zale

game

Some are real words and some are nonsense words. Circle the real words.

### Sight Words

love  
your

### Spelling Words

little  
one

# Home Learning Challenge



Level 5

Read each word. Draw a line to match the word to the correct picture.

play

snake

plane

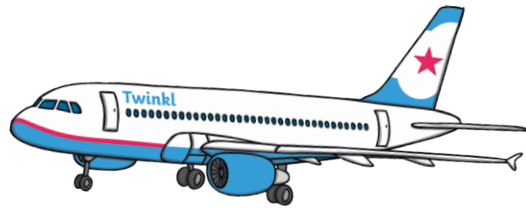
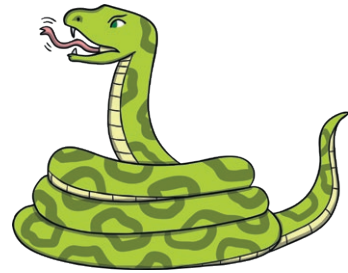
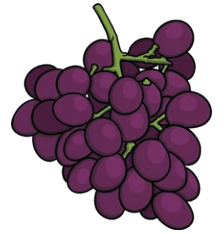
amaze

haystack

grapes

shape

cake



# Home Learning Challenge Answers



Level 5

Read each word. Draw a line to match the word to the correct picture.

play

snake

plane

amaze

haystack

grapes

shape

cake